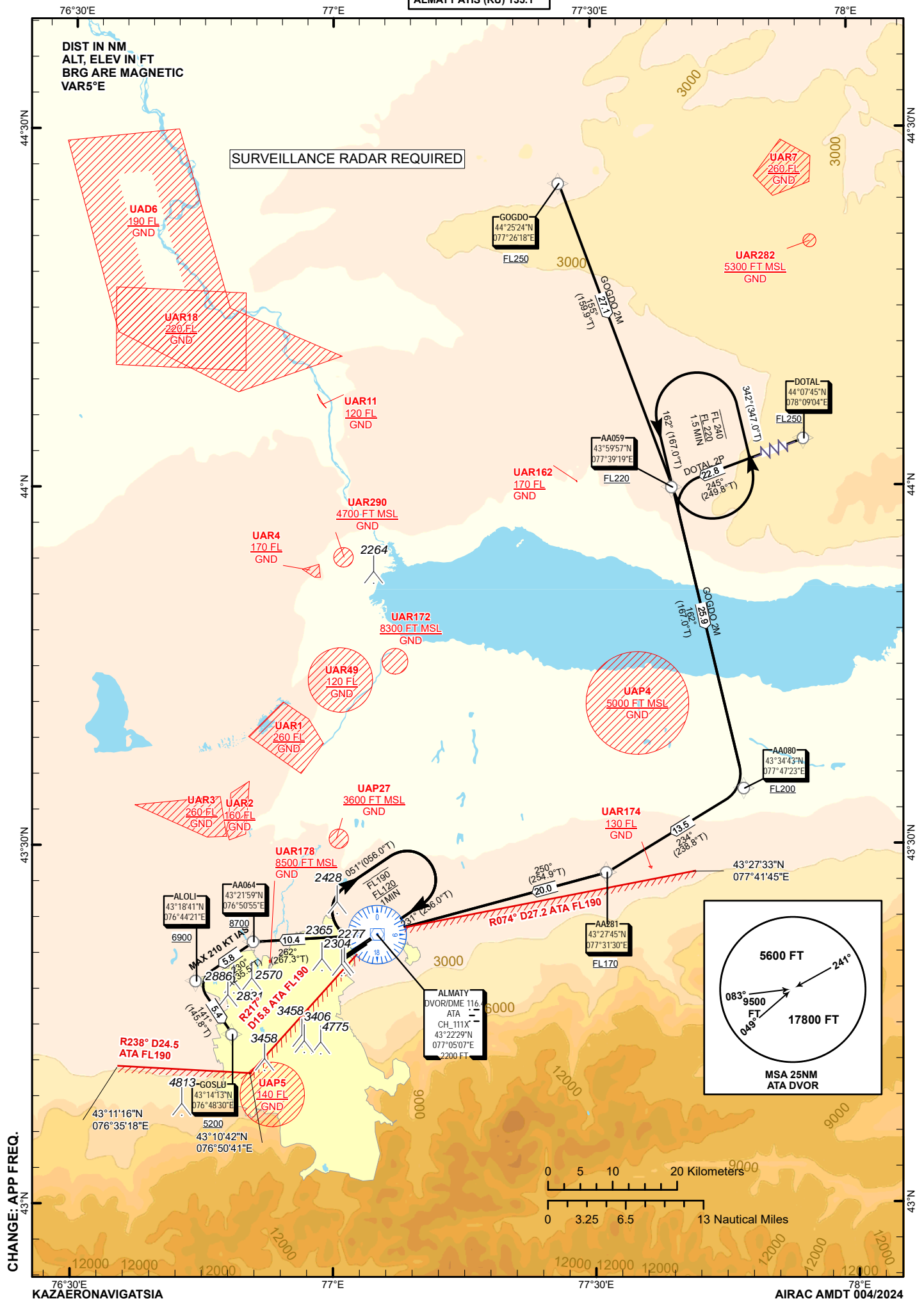


ALMATY
RWY 05L/05R



| TABULAR DESCRIPTION | | | | | | | | | | | |
|---------------------|------------------------|-----------------------------------|------------|---------------|-----------------------|-------------|----------------|-------------|----------|---------|--------------------------|
| DOTAL 2P | | | | | | | | | | | |
| Serial Number | Path Descriptor | Waypoint Identifier | Fly - over | Course °M(°T) | Magnetic Variation(°) | Distance NM | Turn Direction | Altitude FT | Speed KT | VPA (°) | Navigation Specification |
| 10 | IF | DOTAL | - | | 5.12 | 0 | - | +FL250 | -315 | - | RNAV1 |
| 20 | TF | AA059 | - | 245(249.8) | 5.12 | 22.8 | - | +FL220 | -280 | - | RNAV1 |
| 30 | TF | AA080 | - | 162(167) | 5.12 | 25.9 | L | +FL200 | -280 | - | RNAV1 |
| 40 | TF | AA281 | - | 234(238.8) | 5.12 | 13.5 | R | +FL170 | -280 | - | RNAV1 |
| 50 | TF | ATA | - | 250(254.9) | 5.12 | 20 | R | +FL120 | -280 | - | RNAV1 |
| 60 | TF | AA064 | - | 262(267.3) | 5.12 | 10.4 | R | +8700 | -210 | - | RNAV1 |
| 70 | TF | ALOLI | - | 230(235.5) | 5.12 | 5.8 | L | +6900 | -210 | - | RNAV1 |
| 80 | TF | GOSLU | - | 141(145.8) | 5.12 | 5.4 | L | +5200 | -210 | - | RNAV1 |
| WAYPOINT LIST | | <div><div></div><div></div></div> | | | | | | | | | |
| DOTAL 2P | | | | | | | | | | | |
| Waypoint Identifier | Coordinates | | | | | | | | | | |
| DOTAL | 440745.00N 0780904.00E | | | | | | | | | | |
| AA059 | 435956.93N 0773919.06E | | | | | | | | | | |
| AA080 | 433443.05N 0774723.42E | | | | | | | | | | |
| AA281 | 432744.74N 0773130.04E | | | | | | | | | | |
| ATA | 432229.35N 0770506.95E | | | | | | | | | | |
| AA064 | 432158.53N 0765054.64E | | | | | | | | | | |
| ALOLI | 431840.90N 0764420.60E | | | | | | | | | | |
| GOSLU | 431413.06N 0764829.77E | | | | | | | | | | |
| | | | | | | | | | | | |
| TABULAR DESCRIPTION | | | | | | | | | | | |
| GOGDO 2M | | | | | | | | | | | |
| Serial Number | Path Descriptor | Waypoint Identifier | Fly - over | Course °M(°T) | Magnetic Variation(°) | Distance NM | Turn Direction | Altitude FT | Speed KT | VPA (°) | Navigation Specification |
| 10 | IF | GOGDO | - | | 5.12 | 0 | - | +FL250 | -315 | - | RNAV1 |
| 20 | TF | AA059 | - | 155(159.9) | 5.12 | 27.1 | L | +FL220 | -280 | - | RNAV1 |
| 30 | TF | AA080 | - | 162(167) | 5.12 | 25.9 | R | +FL200 | -280 | - | RNAV1 |
| 40 | TF | AA281 | - | 234(238.8) | 5.12 | 13.5 | R | +FL170 | -280 | - | RNAV1 |
| 50 | TF | ATA | - | 250(254.9) | 5.12 | 20 | R | +FL120 | -280 | - | RNAV1 |
| 60 | TF | AA064 | - | 262(267.3) | 5.12 | 10.4 | R | +8700 | -210 | - | RNAV1 |
| 70 | TF | ALOLI | - | 230(235.5) | 5.12 | 5.8 | L | +6900 | -210 | - | RNAV1 |
| 80 | TF | GOSLU | - | 141(145.8) | 5.12 | 5.4 | L | +5200 | -210 | - | RNAV1 |